

Mental health, learning disability
and neurodevelopmental care



Sussex Partnership
NHS Foundation Trust

▶ SussexPartnership.nhs.uk

63

Brighton and Hove HOSC April 2026

Chalkhill update



Our vision
Delivering great care and
improving outcomes together

Inpatient Transformation Programme

Phase 1 – Engagement and Data Analysis

- Stakeholder Appreciative Inquiries
- Baseline data collection
- Programme Governance setup

Phase 2 – Co-design and Model Development

- Develop clinical, workforce and estates models
- Codesign workshops

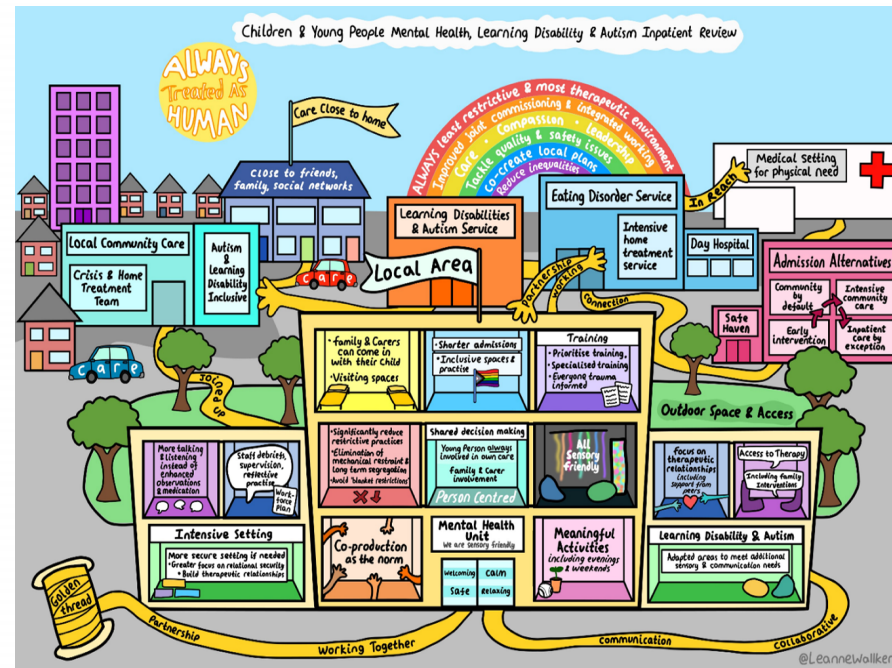
Aim of the programme to improve patient experience, safety and outcomes through redesigned clinical model, workforce structure and estates upgrade

Phase 4 – Opening of Unit and BAU

- Phased reopening
- Post Opening review

Phase 3 – Mobilisation

- Clinical model agreed
- Recruitment and training plan in place
- Estates work completed



What will be in place for Re-opening

Clinical Model

Purposeful Admissions

7-day therapeutic programme

Trauma Informed Practice

Whole Pathway Approach

Workforce

Safe staffing & duty doctor as standard

Strengthened MDT working across whole pathway

LD and Autism Training

Lived Experience Roles

Reflective Practice and Supervision

Estates

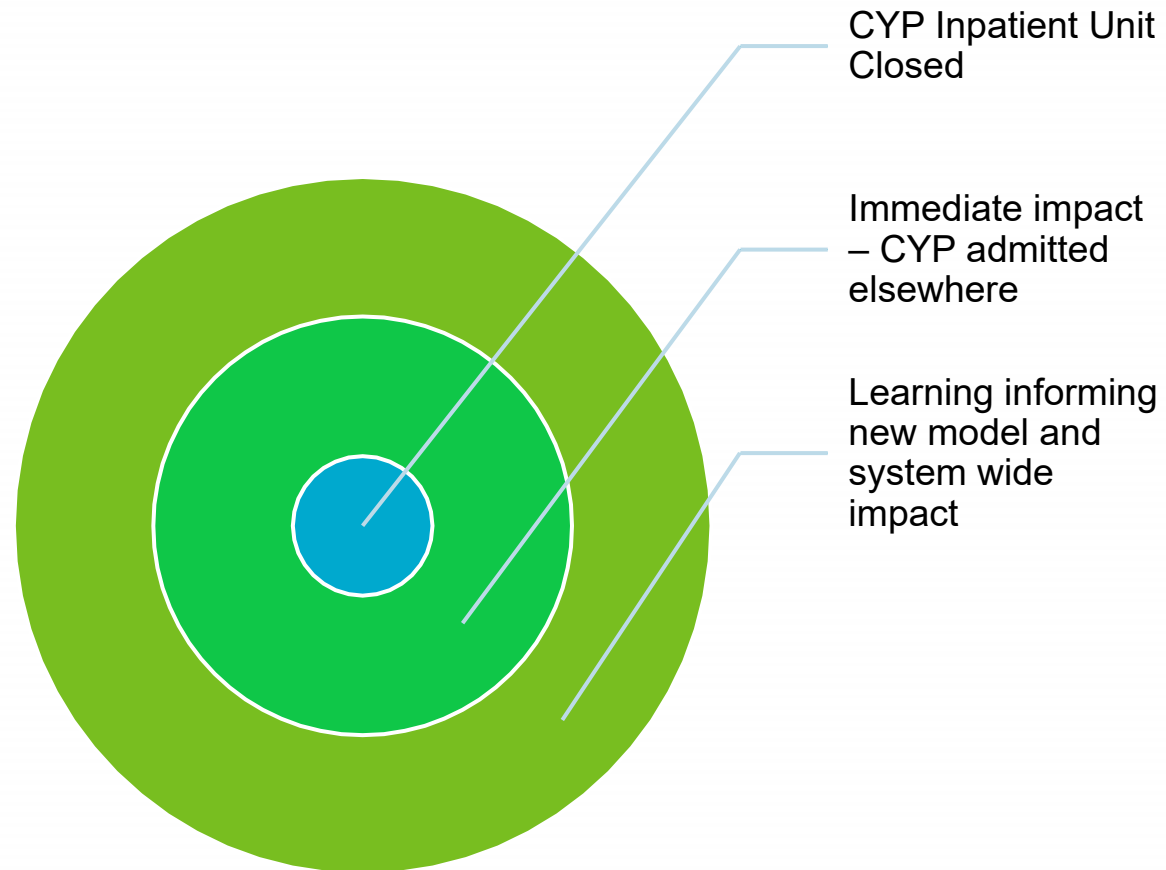
Sensory and Quiet Spaces

Outdoor Spaces

Dedicated Family Spaces / room

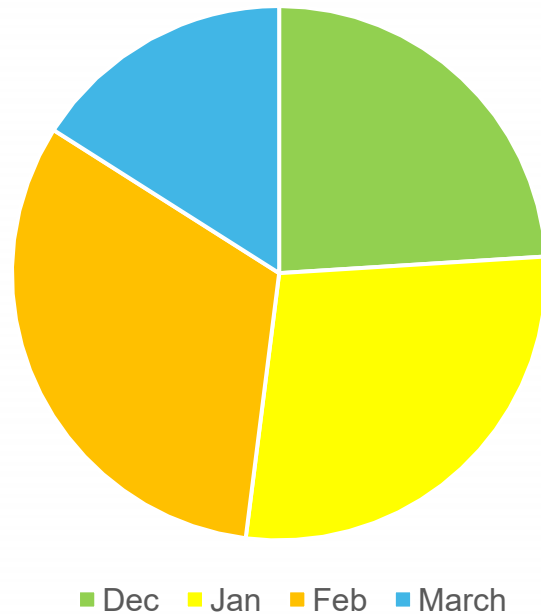
High Intensity Area

System Impact on the Closure of CYP MH Inpatient Unit

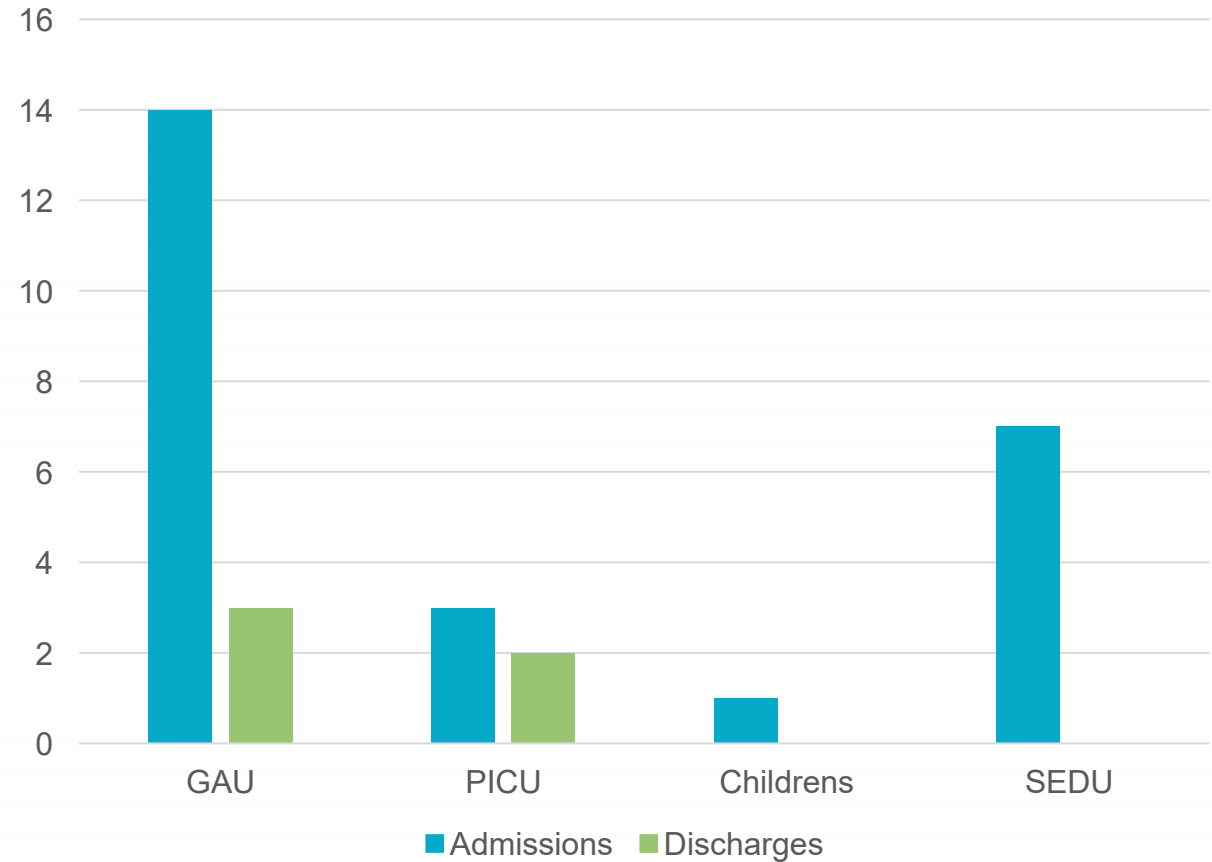


Children & Young People Admissions & Discharge Data December 25- March 26

Admissions per month



Total Admissions and Discharges





Sussex Partnership
NHS Foundation Trust

Thank you for your time

Our Trust charity:

HEADS ON headsoncharity.org

Follow us on social media:

X @SPFT_NHS

f Sussex Partnership NHS Foundation Trust

in Sussex Partnership NHS Foundation Trust

@ sussex_partnership_nhs

Visit: SussexPartnership.nhs.uk



Our vision

Delivering great care and
improving outcomes together